

Affinity Prestained Plus Protein Ladder (10-250 kDa) with 40kD Manual

Reminder: Each time it is aspirated, the sterilized tip (or clean needle) should be replaced and the cover should be covered immediately after used, so as not to introduce protease contamination and cause degradation!

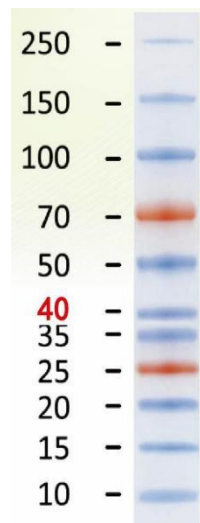
【Storage conditions】 -20 °C constant temperature for long-term storage, 4 °C storage for 6 months, it is recommended to aliquot to avoid repeated freeze-thaw.

【Product Introduction】

This product is a blend of 11 purified natural proteins spanning 10 to 250 kDa with a concentration of approximately 0.2 to 0.4 mg/ml in each band. The 25 kDa and 70 kDa bands are red pre-stained bands, with an additional 40 kDa bands added to facilitate the accurate location of each band. This product is suitable as a molecular weight reference for denatured protein samples during SDS-PAGE electrophoresis, and can observe the electrophoretic separation of protein samples in real time, and can also be used to detect the transfer efficiency of Western blot. Since covalently bound dyes affect the electrophoretic mobility of protein molecules, this product is suitable for a rough estimate of the molecular weight of the protein sample of interest.

【Usage】

1. After melting this product at room temperature, gently mix well to dissolve the precipitate well (do not boil and heat);
2. Aspirate 3 to 5 µl into the loading well of SDS-polyacrylamide glue and electrophoresis and transfer with the sample to be tested;
3. After electrophoresis, stain the bands of interest with protein staining solution to observe the detecting band.



【Precautions】

1. The product taken out from the refrigerator should be restored to room temperature when used, otherwise, different degrees of dispersion of electrophoretic bands may occur due to incomplete protein denaturation at low temperatures;
2. Restore the product to room temperature before use and mix well so that the pellet is fully dissolved, otherwise there may be different degrees of diffusion or dragging of electrophoretic bands;
3. This product contains SDS, the protein has been denatured, it should not be used as a molecular weight reference standard for natural protein molecular electrophoresis.

kDa, 4-15% PAGE

【Remark】

For research use only