

MBP Mouse monoclonal Ab

Cat.#: BF8010
Size: 100ul,200ul

Concn.: 1mg/ml
Source: Mouse

Mol.Wt.: 33kDa
Clonality: Monoclonal

Application: WB 1:500-1:2000, IHC 1:50-1:200
*The optimal dilutions should be determined by the end user.

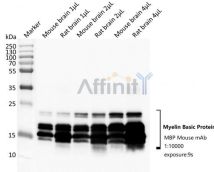
Reactivity: Human,Mouse,Rat

Purification: Affinity-chromatography.

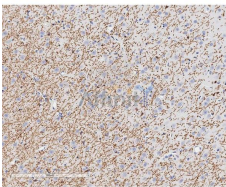
Immunogen: A synthesized peptide derived from human MBP.

Uniprot: P02686

Storage: Mouse IgG in phosphate buffered saline (without Mg²⁺ and Ca²⁺), pH 7.4, 150mM NaCl, 0.02% sodium azide and 50% glycerol. Store at -20 °C. Stable for 12 months from date of receipt.



Western blot analysis of extracts from rat brain or mouse brain samples, using MBP Mouse mAb at 1:10000. exposure:9s.



BF8010 at 1/15000 staining Rat brain tissue sections by IHC-P.

IMPORTANT: For western blot, incubate membrane with diluted primary Ab in 5% w/v milk, 1X TBS, 0.1% Tween@20 at 4°C with gentle shaking, overnight.

For Research Use Only. Not for use in diagnostic and therapeutic procedures. Not for resale without express authorization.