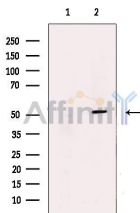


## MEF2C Ab

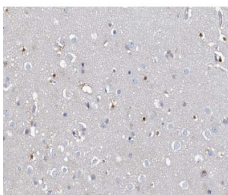
[Images\(2\)](#)

Cat.#: AF0433	Concn.: ~1mg/ml	Mol.Wt.: 51kDa
Size:	Source: Rabbit	Clonality: Polyclonal

Application:	IHC 1:50-1:200, WB 1:500-1:2000 *The optimal dilutions should be determined by the end user.
Reactivity:	Human,Mouse
Storage:	Rabbit IgG in phosphate buffered saline , pH 7.4, 150mM NaCl, 0.02% sodium azide and 50% glycerol. Store at -20 °C. Stable for 12 months from date of receipt.
Purification:	The antiserum was purified by peptide affinity chromatography using SulfoLink™ Coupling Resin (Thermo Fisher Scientific).
Immunogen:	A synthesized peptide derived from human MEF2C, corresponding to a region within C-terminal amino acids.
Uniprot:	Q06413
Description:	MEF2C is a transcription factor of the MADS family which binds specifically to the MEF2 element present in the regulatory regions of many muscle-specific genes. May be involved in myogenesis, neurogenesis and in the development of cortical architecture. Three splice-variant isoforms have been described.



Western blot analysis of extracts from Raji, using MEF2C Ab. The lane on the left was treated with blocking peptide.



AF0433 at 1/100 staining human brain tissue sections by IHC-P. The tissue was formaldehyde fixed and a heat mediated antigen retrieval step in citrate buffer was performed. The tissue was then blocked and incubated with the Ab for 1.5 hours at 22°C. An HRP conjugated goat anti-rabbit Ab was used as the secondary Ab.

**IMPORTANT:** For western blot, incubate membrane with diluted primary Ab in 5% w/v milk , 1X TBS, 0.1% Tween@20 at 4°C with gentle shaking,



**Affinity Biosciences**  
website: [www.affbiotech.com](http://www.affbiotech.com)  
order: [order@affbiotech.com](mailto:order@affbiotech.com)

---

overnight.

For Research Use Only. Not for use in diagnostic and therapeutic procedures. Not for resale without express authorization.