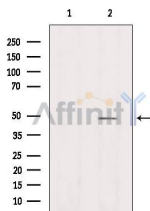


## AZI2 Ab

[Images\(1\)](#)

Cat.#: AF0553	Concn.: ~1mg/ml	Mol.Wt.: 48kDa
Size:	Source: Rabbit	Clonality: Polyclonal
Application:	WB 1:500-1:2000, IF/ICC 1:100-1:500 *The optimal dilutions should be determined by the end user.	
Reactivity:	Human,Mouse,Rat	
Storage:	Rabbit IgG in phosphate buffered saline , pH 7.4, 150mM NaCl, 0.02% sodium azide and 50% glycerol. Store at -20 °C. Stable for 12 months from date of receipt.	
Purification:	The antiserum was purified by peptide affinity chromatography using SulfoLink™ Coupling Resin (Thermo Fisher Scientific).	
Immunogen:	A synthesized peptide derived from human AZI2, corresponding to a region within N-terminal amino acids.	
Uniprot:	Q9H6S1	
Description:	AZI2 Activates serine/threonine-protein kinase TBK1 and facilitates its oligomerization. Enhances the phosphorylation of NF-kappa-B p65 subunit RELA by TBK1. Promotes TBK1-induced as well as TNF-alpha or PMA-induced activation of NF-kappa-B. Participates in IFN-beta promoter activation via TICAM1. Interacts with IKBKE, TBK1 and TICAM1. 2 isoforms of the human protein are produced by alternative splicing.	



Western blot analysis of extracts from HeLa, using AZI2 Ab. Lane 1 was treated with the antigen-specific peptide.

**IMPORTANT:** For western blot, incubate membrane with diluted primary Ab in 5% w/v milk , 1X TBS, 0.1% Tween@20 at 4°C with gentle shaking, overnight.

For Research Use Only. Not for use in diagnostic and therapeutic procedures. Not for resale without express authorization.