

## NDUC2 Ab

[Images\(2\)](#)

Cat.#: AF0351	Concn.: ~1mg/ml	Mol.Wt.: 14kDa
Size:	Source: Rabbit	Clonality: Polyclonal

**Application:** IHC 1:50-1:200, WB 1:500-1:2000  
\*The optimal dilutions should be determined by the end user.

**Reactivity:** Human,Rat

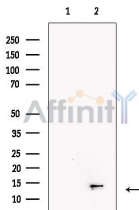
**Storage:** Rabbit IgG in phosphate buffered saline , pH 7.4, 150mM NaCl, 0.02% sodium azide and 50% glycerol. Store at -20 °C. Stable for 12 months from date of receipt.

**Purification:** The antiserum was purified by peptide affinity chromatography using SulfoLink™ Coupling Resin (Thermo Fisher Scientific).

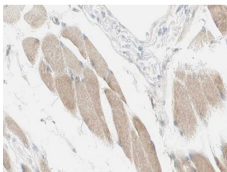
**Immunogen:** A synthesized peptide derived from human NDUC2, corresponding to a region within C-terminal amino acids.

**Uniprot:** O95298

**Description:** NDUFC2 Accessory subunit of the mitochondrial membrane respiratory chain NADH dehydrogenase (Complex I), that is believed not to be involved in catalysis. Complex I functions in the transfer of electrons from NADH to the respiratory chain. The immediate electron acceptor for the enzyme is believed to be ubiquinone. Belongs to the complex I NDUFC2 subunit family. Complex I is composed of 45 different subunits.



Western blot analysis of extracts from 293T, using NDUC2 Ab. The lane on the left was treated with blocking peptide.



AF0351 at 1/100 staining human Skeletal muscle tissue sections by IHC-P. The tissue was formaldehyde fixed and a heat mediated antigen retrieval step in citrate buffer was performed. The tissue was then blocked and incubated with the Ab for 1.5 hours at 22°C. An HRP conjugated goat anti-rabbit Ab was used as the secondary Ab.

**IMPORTANT:** For western blot, incubate membrane with diluted primary Ab

in 5% w/v milk , 1X TBS, 0.1% Tween@20 at 4°C with gentle shaking,  
overnight.

For Research Use Only. Not for use in diagnostic and therapeutic  
procedures. Not for resale without express authorization.