

ZNF265 Ab

[Images\(1\)](#)

Cat.#: AF0753 Concn.: ~1mg/ml Mol.Wt.: 34kDa
Size: Source: Rabbit Clonality: Polyclonal

Application: WB 1:500-1:2000, IF/ICC 1:100-1:500
*The optimal dilutions should be determined by the end user.

Reactivity: Human,Mouse,Rat

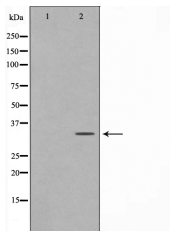
Storage: Rabbit IgG in phosphate buffered saline , pH 7.4, 150mM NaCl, 0.02% sodium azide and 50% glycerol. Store at -20 °C. Stable for 12 months from date of receipt.

Purification: The antiserum was purified by peptide affinity chromatography using SulfoLink™ Coupling Resin (Thermo Fisher Scientific).

Immunogen: A synthesized peptide derived from human ZNF265, corresponding to a region within the internal amino acids.

Uniprot: O95218

Description: ZNF265 Splice factor required for alternative splicing of TRA2B/SFRS10 transcripts. May interfere with constitutive 5'- splice site selection. Belongs to the ZRANB2 family. Interacts with the C-terminal half of SNRNP70, the Arg/Ser-rich domain of XE7 as well as with U2AF1 and CLK1. 2 isoforms of the human protein are produced by alternative splicing. Note: This description may include information from UniProtKB.



Western blot analysis on HeLa cell lysates using ZNF265 Ab, The lane on the left was treated with the antigen-specific peptide.

IMPORTANT: For western blot, incubate membrane with diluted primary Ab in 5% w/v milk , 1X TBS, 0.1% Tween@20 at 4°C with gentle shaking, overnight.

For Research Use Only. Not for use in diagnostic and therapeutic procedures. Not for resale without express authorization.