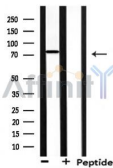


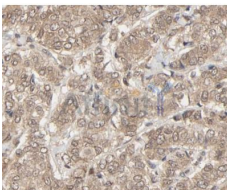
NEDD8 Ab

[References\(1\)](#) [Images\(2\)](#)

Cat.#: AF0271	Concn.: ~1mg/ml	Mol.Wt.: 10kD(Mono),85kDa(Polymer)
Size:	Source: Rabbit	Clonality: Polyclonal
Application:	WB 1:500-1:3000, IHC 1:50-1:200, IF/ICC 1:100-1:500 *The optimal dilutions should be determined by the end user.	
Reactivity:	Human,Mouse,Rat,Monkey	
Storage:	Rabbit IgG in phosphate buffered saline , pH 7.4, 150mM NaCl, 0.02% sodium azide and 50% glycerol. Store at -20 °C. Stable for 12 months from date of receipt.	
Purification:	The antiserum was purified by peptide affinity chromatography using SulfoLink™ Coupling Resin (Thermo Fisher Scientific).	
Immunogen:	A synthesized peptide derived from human NEDD8, corresponding to a region within the internal amino acids.	
Uniprot:	Q15843	
Description:	NEDD8 a member of the ubiquitin family of proteins. Approximately 60% identical to ubiquitin protein.. Activated by an E1-like complex, consisting of App-b1 and Uba3 and then linked to the E2-like enzyme, Ubc12. The major target protein modified by nedd8 is cullin-4a.	



Western blot analysis of extracts from 293, using NEDD8 Ab.



AF0271 at 1/100 staining human breast cancer tissue by IHC-P. The sample was formaldehyde fixed and a heat mediated antigen retrieval step in citrate buffer was performed. The sample was then blocked and incubated with the Ab for 1.5 hours at 22°C. An HRP conjugated goat anti-rabbit Ab was used as the secondary Ab.

IMPORTANT: For western blot, incubate membrane with diluted primary Ab in 5% w/v milk , 1X TBS, 0.1% Tween@20 at 4°C with gentle shaking,

overnight.

For Research Use Only. Not for use in diagnostic and therapeutic procedures. Not for resale without express authorization.