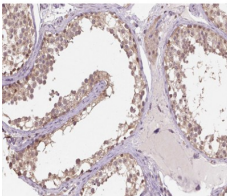


HSP105 Ab

[References\(1\)](#) [Images\(2\)](#)

Cat.#: AF0617	Concn.: ~1mg/ml	Mol.Wt.: 100kDa
Size:	Source: Rabbit	Clonality: Polyclonal
Application:	WB 1:500-1:2000, IHC 1:50-1:200, IF/ICC 1:100-1:500 *The optimal dilutions should be determined by the end user.	
Reactivity:	Human,Mouse	
Storage:	Rabbit IgG in phosphate buffered saline , pH 7.4, 150mM NaCl, 0.02% sodium azide and 50% glycerol. Store at -20 °C. Stable for 12 months from date of receipt.	
Purification:	The antiserum was purified by peptide affinity chromatography using SulfoLink™ Coupling Resin (Thermo Fisher Scientific).	
Immunogen:	A synthesized peptide derived from human HSP105, corresponding to a region within C-terminal amino acids.	
Uniprot:	Q92598	
Description:	HSP105 a molecular chaperone of the heat shock protein 70 family. Has ATPase activity. Expressed at especially high levels in mammalian brain and has been shown to suppress apoptosis in neuronal cells and to prevent the aggregation of proteins following heat shock. Known to interact with a variety of proteins including alpha-tubulin and the androgen receptor.	



AF0617 at 1/100 staining human testis tissue sections by IHC-P. The tissue was formaldehyde fixed and a heat mediated antigen retrieval step in citrate buffer was performed. The tissue was then blocked and incubated with the Ab for 1.5 hours at 22°C. An HRP conjugated goat anti-rabbit Ab was used as the secondary Ab.

IMPORTANT: For western blot, incubate membrane with diluted primary Ab in 5% w/v milk , 1X TBS, 0.1% Tween@20 at 4°C with gentle shaking, overnight.

For Research Use Only. Not for use in diagnostic and therapeutic procedures. Not for resale without express authorization.