

FAP1 Ab

[References\(1\)](#) [Images\(7\)](#)

Cat.#: AF0739 Concn.: ~1mg/ml Mol.Wt.: 85~100kDa
Size: Source: Rabbit Clonality: Polyclonal

Application: WB 1:500-1:2000, IHC 1:50-1:200, IF/ICC 1:100-1:500
*The optimal dilutions should be determined by the end user.

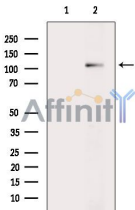
Reactivity: Human,Mouse,Rat

Storage: Rabbit IgG in phosphate buffered saline , pH 7.4, 150mM NaCl, 0.02% sodium azide and 50% glycerol. Store at -20 °C. Stable for 12 months from date of receipt.

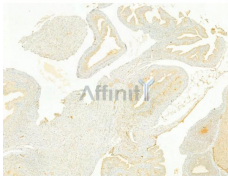
Purification: The antiserum was purified by peptide affinity chromatography using SulfoLink™ Coupling Resin (Thermo Fisher Scientific).

Immunogen: A synthesized peptide derived from human FAP1, corresponding to a region within the internal amino acids.

Uniprot: Q12884



Western blot analysis of extracts from rat kidney tissue, using FAP1 Ab. The lane on the left was treated with blocking-peptides.



AF0739 at 1/100 staining Rat ovary tissue by IHC-P. The sample was formaldehyde fixed and a heat mediated antigen retrieval step in citrate buffer was performed. The sample was then blocked and incubated with the primary Ab at 4°C overnight. An HRP conjugated anti-Rabbit Ab was used as the secondary Ab.

IMPORTANT: For western blot, incubate membrane with diluted primary Ab in 5% w/v milk , 1X TBS, 0.1% Tween@20 at 4°C with gentle shaking, overnight.

For Research Use Only. Not for use in diagnostic and therapeutic procedures. Not for resale without express authorization.