

## Collagen IV Ab

[References\(6\)](#) [Images\(4\)](#)

Cat.#: AF0510                      Concn.: ~1mg/ml                      Mol.Wt.: 160kDa?300kDa  
Size:                                      Source: Rabbit                      Clonality: Polyclonal

Application:                      WB 1:500-1:2000, IHC 1:50-1:200, IF/ICC 1:100-1:500

\*The optimal dilutions should be determined by the end user.

Reactivity:                      Human,Mouse,Rat

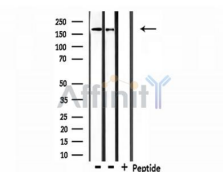
Storage:                      Rabbit IgG in phosphate buffered saline , pH 7.4, 150mM NaCl, 0.02% sodium azide and 50% glycerol. Store at -20 °C. Stable for 12 months from date of receipt.

Purification:                      The antiserum was purified by peptide affinity chromatography using SulfoLink™ Coupling Resin (Thermo Fisher Scientific).

Immunogen:                      A synthesized peptide derived from human Collagen IV

Uniprot:                      P02462

Description:                      COL4A1 Type IV collagen is the major structural component of glomerular basement membranes (GBM), forming a 'chicken-wire' meshwork together with laminins, proteoglycans and entactin/nidogen. Belongs to the type IV collagen family. There are six type IV collagen isoforms, alpha 1(IV)- alpha 6(IV), each of which can form a triple helix structure with 2 other chains to generate type IV collagen network. 2 isoforms of the human protein are produced by alternative splicing. Note: This description may include information from UniProtKB.



Western blot analysis of extracts from 293 and Hela, using Collagen IV Ab.

Lane1:293 cells,

Lane2:Hela cells,

Lane3: 293 cells treated with blocking peptide.

**IMPORTANT:** For western blot, incubate membrane with diluted primary Ab in 5% w/v milk , 1X TBS, 0.1% Tween@20 at 4°C with gentle shaking, overnight.

For Research Use Only. Not for use in diagnostic and therapeutic procedures. Not for resale without express authorization.