

Phospho-PAK3 (Ser154) Ab

[Images\(2\)](#)

Cat.#: AF0046 Concn.: ~1mg/ml Mol.Wt.: 72kDa
Size: Source: Rabbit Clonality: Polyclonal

Application: WB 1:500-1:2000, IHC 1:50-1:200
*The optimal dilutions should be determined by the end user.

Reactivity: Human,Mouse,Rat

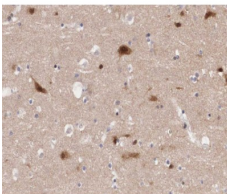
Storage: Rabbit IgG in phosphate buffered saline , pH 7.4, 150mM NaCl, 0.02% sodium azide and 50% glycerol. Store at -20 °C. Stable for 12 months from date of receipt.

Purification: The Ab is from purified rabbit serum by affinity purification via sequential chromatography on phospho-peptide and non-phospho-peptide affinity columns.

Immunogen: A synthesized peptide derived from human PAK3 around the phosphorylation site of Ser154.

Uniprot: O75914

Description: PAK3 a protein kinase of the STE20 family that regulates synapse formation and plasticity in the hippocampus. May be necessary for dendritic development and for the rapid cytoskeletal reorganization in dendritic spines associated with synaptic plasticity. Forms an activated complex with GTP-bound P21, CDC2 and RAC1 proteins. Missense and truncation mutations linked to nonsyndromic mental retardation type 30 (MRX30). Two alternatively spliced human isoforms have been reported. Note: This description may include information from UniProtKB.



AF0046 at 1/200 staining human Cerebellum tissue sections by IHC-P. The tissue was formaldehyde fixed and a heat mediated antigen retrieval step in citrate buffer was performed. The tissue was then blocked and incubated with the Ab for 1.5 hours at 22°C. An HRP conjugated goat anti-rabbit Ab was used as the secondary Ab.

IMPORTANT: For western blot, incubate membrane with diluted primary Ab in 5% w/v milk , 1X TBS, 0.1% Tween@20 at 4°C with gentle shaking, overnight.

For Research Use Only. Not for use in diagnostic and therapeutic procedures. Not for resale without express authorization.