

# PPY Ab

[Images\(1\)](#)

Cat.#: BF0012	Concn.: ~1mg/ml	Mol.Wt.: 10.4kDa
Size:	Source: Mouse	Clonality: Monoclonal

**Application:** ELISA 1:10000, WB 1:500-1:2000, FCM 1:200-1:400  
\*The optimal dilutions should be determined by the end user.

**Reactivity:** Human

**Storage:** Mouse IgG1 in phosphate buffered saline (without Mg<sup>2+</sup> and Ca<sup>2+</sup>), pH 7.4, 150mM NaCl, 0.02% sodium azide and 50% glycerol. Store at -20 °C. Stable for 12 months from date of receipt.

**Purification:** Affinity-chromatography.

**Immunogen:** Purified recombinant fragment of human PPY expressed in E. Coli.

**Uniprot:** P01298

**Description:** This gene belongs to the NPY family and it encodes a protein that is synthesized as a 95 aa polypeptide precursor in the pancreatic islets of Langerhans. It is cleaved into two peptide products; the active hormone of 36 aa and an icosapeptide of unknown function. The hormone acts as a regulator of pancreatic and gastrointestinal functions and may be important in the regulation of food intake.

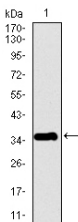


Figure 1: Western blot analysis using PPY mAb against human PPY recombinant protein. (Expected MW is 35.9 kDa)

**IMPORTANT:** For western blot, incubate membrane with diluted primary Ab in 5% w/v milk , 1X TBS, 0.1% Tween@20 at 4°C with gentle shaking, overnight.

For Research Use Only. Not for use in diagnostic and therapeutic procedures. Not for resale without express authorization.