

## TRIP6 Ab

[Images\(1\)](#)

Cat.#: BF0021                      Concn.: ~1mg/ml                      Mol.Wt.: 50.3kDa  
Size:                                      Source: Mouse                          Clonality: Monoclonal

Application:                          ELISA 1:10000, WB 1:500-1:2000, FCM 1:200-1:400  
\*The optimal dilutions should be determined by the end user.

Reactivity:                              Human

Storage:                                Mouse IgG1 in phosphate buffered saline (without Mg<sup>2+</sup> and Ca<sup>2+</sup>), pH 7.4, 150mM NaCl, 0.02% sodium azide and 50% glycerol. Store at -20 °C. Stable for 12 months from date of receipt.

Purification:                          Affinity-chromatography.

Immunogen:                            Purified recombinant fragment of human TRIP6 expressed in E. Coli.

Uniprot:                                Q15654

Description:                          This gene is a member of the zyxin family and encodes a protein with three LIM zinc-binding domains. This protein localizes to focal adhesion sites and along actin stress fibers. Recruitment of this protein to the plasma membrane occurs in a lysophosphatidic acid (LPA)-dependent manner and it regulates LPA-induced cell migration. Alternatively spliced variants which encode different protein isoforms have been described; however, not all variants have been fully characterized.

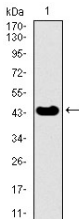


Figure 1: Western blot analysis using TRIP6 mAb against human TRIP6 recombinant protein. (Expected MW is 44.4 kDa)

**IMPORTANT:** For western blot, incubate membrane with diluted primary Ab in 5% w/v milk , 1X TBS, 0.1% Tween@20 at 4°C with gentle shaking, overnight.

For Research Use Only. Not for use in diagnostic and therapeutic procedures. Not for resale without express authorization.