

## TWF1 Ab

[Images\(1\)](#)

Cat.#: BF0040                      Concn.: ~1mg/ml                      Mol.Wt.: 40.3kDa  
Size:                                      Source: Mouse                      Clonality: Monoclonal

Application:                      ELISA 1:10000, WB 1:500-1:2000, IHC 1:200-1:1000, IF/ICC  
1:200-1:1000, FCM 1:200-1:400

\*The optimal dilutions should be determined by the end user.

Reactivity:                      Human

Storage:                      Mouse IgG1 in phosphate buffered saline (without Mg<sup>2+</sup> and Ca<sup>2+</sup>), pH  
7.4, 150mM NaCl, 0.02% sodium azide and 50% glycerol. Store at -20 °C.  
Stable for 12 months from date of receipt.

Purification:                      Affinity-chromatography.

Immunogen:                      Purified recombinant fragment of human TWF1 expressed in E. Coli.

Uniprot:                      Q12792

Description:                      This gene encodes twinfilin, an actin monomer-binding protein conserved  
from yeast to mammals. Studies of the mouse counterpart suggest that this  
protein may be an actin monomer-binding protein, and its localization to  
cortical G-actin-rich structures may be regulated by the small GTPase  
RAC1.

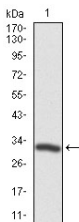


Figure 1: Western blot analysis using TWF1 mAb against human TWF1 recombinant protein. (Expected MW is 31.1 kDa)

**IMPORTANT:** For western blot, incubate membrane with diluted primary Ab in 5% w/v milk , 1X TBS, 0.1% Tween@20 at 4°C with gentle shaking, overnight.

For Research Use Only. Not for use in diagnostic and therapeutic procedures. Not for resale without express authorization.