

## NR6A1 Ab

[Images\(1\)](#)

Cat.#: BF0049	Concn.: ~1mg/ml	Mol.Wt.: 54.3kDa
Size:	Source: Mouse	Clonality: Monoclonal

Application: ELISA 1:10000, WB 1:500-1:2000, IHC 1:200-1:1000, IF/ICC  
1:200-1:1000, FCM 1:200-1:400

\*The optimal dilutions should be determined by the end user.

Reactivity: Human

Storage: Mouse IgG1 in phosphate buffered saline (without Mg<sup>2+</sup> and Ca<sup>2+</sup>), pH 7.4, 150mM NaCl, 0.02% sodium azide and 50% glycerol. Store at -20 °C. Stable for 12 months from date of receipt.

Purification: Affinity-chromatography.

Immunogen: Purified recombinant fragment of human NR6A1 expressed in E. Coli.

Uniprot: Q15406

Description: This gene encodes an orphan nuclear receptor which is a member of the nuclear hormone receptor family. Its expression pattern suggests that it may be involved in neurogenesis and germ cell development. The protein can homodimerize and bind DNA, but in vivo targets have not been identified.

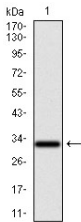


Figure 1: Western blot analysis using NR6A1 mAb against human NR6A1 recombinant protein. (Expected MW is 32.4 kDa)

**IMPORTANT:** For western blot, incubate membrane with diluted primary Ab in 5% w/v milk, 1X TBS, 0.1% Tween@20 at 4°C with gentle shaking, overnight.

For Research Use Only. Not for use in diagnostic and therapeutic procedures. Not for resale without express authorization.