

DCX Ab

[Images\(1\)](#)

Cat.#: BF0083	Concn.: ~1mg/ml	Mol.Wt.: 49.3kDa
Size:	Source: Mouse	Clonality: Monoclonal

Application: ELISA 1:10000, WB 1:500-1:2000, IHC 1:200-1:1000, IF/ICC 1:200-1:1000, FCM 1:200-1:400

*The optimal dilutions should be determined by the end user.

Reactivity: Human

Storage: Mouse IgG1 in phosphate buffered saline (without Mg²⁺ and Ca²⁺), pH 7.4, 150mM NaCl, 0.02% sodium azide and 50% glycerol. Store at -20 °C. Stable for 12 months from date of receipt.

Purification: Affinity-chromatography.

Immunogen: Purified recombinant fragment of human DCX expressed in E. Coli.

Uniprot: O43602

Description: In the developing cortex, cortical neurons must migrate over long distances to reach the site of their final differentiation. The protein encoded by this gene is a cytoplasmic protein which appears to direct neuronal migration by regulating the organization and stability of microtubules. The encoded protein contains two doublecortin domains, which bind microtubules. In addition, the encoded protein interacts with LIS1, the regulatory gamma subunit of platelet activating factor acetylhydrolase, and this interaction is important to proper microtubule function in the developing cortex. Mutations in this gene are a cause of X-linked lissencephaly. Multiple transcript variants encoding at least three different isoforms have been found for this gene.

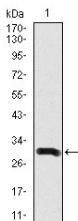


Figure 1: Western blot analysis using DCX mAb against human DCX recombinant protein. (Expected MW is 34.1 kDa)

IMPORTANT: For western blot, incubate membrane with diluted primary Ab in 5% w/v milk, 1X TBS, 0.1% Tween@20 at 4°C with gentle shaking, overnight.

For Research Use Only. Not for use in diagnostic and therapeutic procedures. Not for resale without express authorization.