

MYF6 Ab

[Images\(1\)](#)

| | | |
|---------------|-----------------|-----------------------|
| Cat.#: BF0649 | Concn.: ~1mg/ml | Mol.Wt.: 27kDa |
| Size: | Source: Mouse | Clonality: Monoclonal |

| | |
|---------------|--|
| Application: | ELISA 1:10000, WB 1:500-1:2000 *The optimal dilutions should be determined by the end user. |
| Reactivity: | Human |
| Storage: | Mouse IgG1 in phosphate buffered saline (without Mg ²⁺ and Ca ²⁺), pH 7.4, 150mM NaCl, 0.02% sodium azide and 50% glycerol. Store at -20 °C. Stable for 12 months from date of receipt. |
| Purification: | Affinity-chromatography. |
| Immunogen: | Purified recombinant fragment of human MYF6 expressed in E. Coli. |
| Uniprot: | P23409 |
| Description: | The protein encoded by this intronless gene is a bZIP transcription factor which can bind as a homodimer to certain promoters and enhancers. It can also form heterodimers with the related proteins CEBP-beta and CEBP-gamma. The encoded protein has been shown to bind to the promoter and modulate the expression of the gene encoding leptin, a protein that plays an important role in body weight homeostasis. Also, the encoded protein can interact with CDK2 and CDK4, thereby inhibiting these kinases and causing growth arrest in cultured cells. |

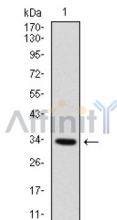


Figure 1: Western blot analysis using MYF6 mAb against human MYF6 recombinant protein. (Expected MW is 33.4 kDa)

IMPORTANT: For western blot, incubate membrane with diluted primary Ab in 5% w/v milk , 1X TBS, 0.1% Tween@20 at 4°C with gentle shaking, overnight.

For Research Use Only. Not for use in diagnostic and therapeutic procedures. Not for resale without express authorization.