

MAP1LC3B Ab

[Images\(3\)](#)

Cat.#: BF0618 Concn.: ~1mg/ml Mol.Wt.: 14.6kDa
Size: Source: Mouse Clonality: Monoclonal

Application: ELISA 1:10000, WB 1:500-1:2000, FCM 1:200-1:400
*The optimal dilutions should be determined by the end user.

Reactivity: Human

Storage: Mouse IgG1 in phosphate buffered saline (without Mg²⁺ and Ca²⁺), pH 7.4, 150mM NaCl, 0.02% sodium azide and 50% glycerol. Store at -20 °C. Stable for 12 months from date of receipt.

Purification: Affinity-chromatography.

Immunogen: Purified recombinant fragment of human MAP1LC3B expressed in E. Coli.

Uniprot: Q9GZQ8

Description: The product of this gene is a subunit of neuronal microtubule-associated MAP1A and MAP1B proteins, which are involved in microtubule assembly and important for neurogenesis. Studies on the rat homolog implicate a role for this gene in autophagy, a process that involves the bulk degradation of cytoplasmic component.

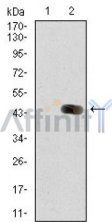


Figure 2: Western blot analysis using MAP1LC3B mAb against HEK293 (1) and MAP1LC3B (AA: 1-125)-hIgGFc transfected HEK293 (2) cell lysate.

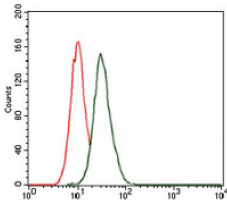


Figure 3: Flow cytometric analysis of HeLa cells using MAP1LC3B mouse mAb (green) and negative control (red).

IMPORTANT: For western blot, incubate membrane with diluted primary Ab in 5% w/v milk , 1X TBS, 0.1% Tween@20 at 4°C with gentle shaking, overnight.



Affinity Biosciences

website:www.affbiotech.com

order:order@affbiotech.com

For Research Use Only. Not for use in diagnostic and therapeutic procedures. Not for resale without express authorization.