

mouse Splunc2 Ab

[Images\(1\)](#)

Cat.#: BF0461 Concn.: ~1mg/ml Mol.Wt.: 25kDa
Size: Source: Mouse Clonality: Monoclonal

Application: ELISA 1:10000, WB 1:500-1:2000, IHC 1:200-1:1000, IF/ICC
1:200-1:1000, FCM 1:200-1:400

*The optimal dilutions should be determined by the end user.

Reactivity: Human

Storage: Mouse IgG1 in phosphate buffered saline (without Mg²⁺ and Ca²⁺), pH
7.4, 150mM NaCl, 0.02% sodium azide and 50% glycerol. Store at -20 °C.
Stable for 12 months from date of receipt.

Purification: Affinity-chromatography.

Immunogen: Purified recombinant fragment of human mouse Splunc2 expressed in E.
Coli.

Uniprot: P07743

Description: PSP Belongs to the BPI/LBP/Plunc superfamily. Plunc family. Note: This
description may include information from UniProtKB.

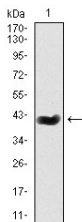


Figure 1: Western blot analysis using mouse Splunc2 mAb against mouse Splunc2 (AA: 16-169) recombinant protein. (Expected MW is 41.6 kDa)

IMPORTANT: For western blot, incubate membrane with diluted primary Ab in 5% w/v milk, 1X TBS, 0.1% Tween@20 at 4°C with gentle shaking, overnight.

For Research Use Only. Not for use in diagnostic and therapeutic procedures. Not for resale without express authorization.