

RPA1 Ab

[Images\(1\)](#)

Cat.#: BF0367 Concn.: ~1mg/ml Mol.Wt.: 68.1kDa
Size: Source: Mouse Clonality: Monoclonal

Application: ELISA 1:10000, WB 1:500-1:2000, IHC 1:200-1:1000, IF/ICC
1:200-1:1000, FCM 1:200-1:400
*The optimal dilutions should be determined by the end user.

Reactivity: Human,Monkey

Storage: Mouse IgG1 in phosphate buffered saline (without Mg²⁺ and Ca²⁺), pH
7.4, 150mM NaCl, 0.02% sodium azide and 50% glycerol. Store at -20 °C.
Stable for 12 months from date of receipt.

Purification: Affinity-chromatography.

Immunogen: Purified recombinant fragment of human RPA1 expressed in E. Coli.

Uniprot: O95602

Description: This gene Plays an essential role in several cellular processes in DNA
metabolism including replication, recombination and DNA repair. Binds and
subsequently stabilizes single-stranded DNA intermediates and thus
prevents complementary DNA from reannealing

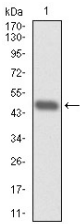


Figure 1: Western blot analysis using RPA1 mAb against human RPA1 (AA: 308-513) recombinant protein. (Expected MW is 48.3 kDa)

IMPORTANT: For western blot, incubate membrane with diluted primary Ab in 5% w/v milk , 1X TBS, 0.1% Tween@20 at 4°C with gentle shaking, overnight.

For Research Use Only. Not for use in diagnostic and therapeutic procedures. Not for resale without express authorization.