

## CDK2 Ab

[References\(2\)](#) [Images\(2\)](#)

Cat.#: BF0053                              Concn.: ~1mg/ml                              Mol.Wt.: 33.9kDa  
Size:    Source: Mouse                                  Clonality: Monoclonal

Application:                                  ELISA 1:10000, WB 1:500-1:2000, IHC 1:200-1:1000, IF/ICC  
1:200-1:1000, FCM 1:200-1:400

\*The optimal dilutions should be determined by the end user.

Reactivity:                                  Human,Mouse

Storage:    Mouse IgG1 in phosphate buffered saline (without Mg<sup>2+</sup> and Ca<sup>2+</sup>), pH 7.4, 150mM NaCl, 0.02% sodium azide and 50% glycerol. Store at -20 °C. Stable for 12 months from date of receipt.

Purification:                                  Affinity-chromatography.

Immunogen:                                  Purified recombinant fragment of human CDK2 expressed in E. Coli.

Uniprot:    P24941

Description:                                  The protein encoded by this gene is a member of the Ser/Thr protein kinase family. This protein kinase is highly similar to the gene products of *S. cerevisiae cdc28*, and *S. pombe cdc2*. It is a catalytic subunit of the cyclin-dependent protein kinase complex, whose activity is restricted to the G1-S phase, and essential for cell cycle G1/S phase transition.

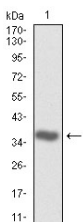


Figure 1: Western blot analysis using CDK2 mAb against human CDK2 (AA: 197-295) recombinant protein. (Expected MW is 36.8 kDa)

**IMPORTANT:** For western blot, incubate membrane with diluted primary Ab in 5% w/v milk , 1X TBS, 0.1% Tween@20 at 4°C with gentle shaking, overnight.

For Research Use Only. Not for use in diagnostic and therapeutic procedures. Not for resale without express authorization.