

## NEDD8 Ab

[Images\(1\)](#)

Cat.#: BF0274                      Concn.: ~1mg/ml                      Mol.Wt.: 9kDa  
Size:                                      Source: Mouse                      Clonality: Monoclonal

Application:                      ELISA 1:10000, WB 1:500-1:2000, IHC 1:200-1:1000, IF/ICC  
1:200-1:1000, FCM 1:200-1:400

\*The optimal dilutions should be determined by the end user.

Reactivity:                      Human,Monkey

Storage:                      Mouse IgG1 in phosphate buffered saline (without Mg<sup>2+</sup> and Ca<sup>2+</sup>), pH  
7.4, 150mM NaCl, 0.02% sodium azide and 50% glycerol. Store at -20 °C.  
Stable for 12 months from date of receipt.

Purification:                      Affinity-chromatography.

Immunogen:                      Purified recombinant fragment of human NEDD8 expressed in E. Coli.

Uniprot:                      Q15843

Description:                      Ubiquitin-like protein which plays an important role in cell cycle control  
and embryogenesis. Covalent attachment to its substrates requires prior  
activation by the E1 complex UBE1C-APPBP1 and linkage to the E2  
enzyme UBE2M. Attachment of NEDD8 to cullins activates their associated  
E3 ubiquitin ligase activity, and thus promotes polyubiquitination and  
proteasomal degradation of cyclins and other regulatory proteins.Tissue  
specificity: Highly expressed in heart, skeletal muscle, spleen, thymus,  
prostate, testis, ovary, colon and leukocytes.

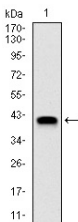


Figure 1: Western blot analysis using NEDD8 mAb against human NEDD8 (AA: 1-81) recombinant protein. (Expected MW is 40 kDa)

**IMPORTANT:** For western blot, incubate membrane with diluted primary Ab in 5% w/v milk, 1X TBS, 0.1% Tween@20 at 4°C with gentle shaking, overnight.

For Research Use Only. Not for use in diagnostic and therapeutic procedures. Not for resale without express authorization.