

SERPINE1 Ab

[Images\(1\)](#)

Cat.#: BF0086 Concn.: ~1mg/ml Mol.Wt.: 45kDa
Size: Source: Mouse Clonality: Monoclonal

Application: ELISA 1:10000, WB 1:500-1:2000, IHC 1:200-1:1000, FCM 1:200-1:400
*The optimal dilutions should be determined by the end user.

Reactivity: Human

Storage: Mouse IgG1 in phosphate buffered saline (without Mg²⁺ and Ca²⁺), pH 7.4, 150mM NaCl, 0.02% sodium azide and 50% glycerol. Store at -20 °C. Stable for 12 months from date of receipt.

Purification: Affinity-chromatography.

Immunogen: Purified recombinant fragment of human SERPINE1 expressed in E. Coli.

Uniprot: P05121

Description: This gene encodes a member of the serine proteinase inhibitor (serpin) superfamily. This member is the principal inhibitor of tissue plasminogen activator (tPA) and urokinase (uPA), and hence is an inhibitor of fibrinolysis. Defects in this gene are the cause of plasminogen activator inhibitor-1 deficiency (PAI-1 deficiency), and high concentrations of the gene product are associated with thrombophilia. Alternatively spliced transcript variants encoding different isoforms have been found for this gene.

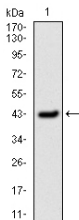


Figure 1: Western blot analysis using SERPINE1 mAb against human SERPINE1 (AA: 194-316) recombinant protein. (Expected MW is 45kDa kDa)

IMPORTANT: For western blot, incubate membrane with diluted primary Ab in 5% w/v milk , 1X TBS, 0.1% Tween@20 at 4°C with gentle shaking, overnight.

For Research Use Only. Not for use in diagnostic and therapeutic procedures. Not for resale without express authorization.