

MAP3K2 Ab

[Images\(1\)](#)

Cat.#: BF0370 Concn.: ~1mg/ml Mol.Wt.: 70kDa
Size: Source: Mouse Clonality: Monoclonal

Application: ELISA 1:10000, WB 1:500-1:2000, IF/ICC 1:200-1:1000
*The optimal dilutions should be determined by the end user.

Reactivity: Human

Storage: Mouse IgG1 in phosphate buffered saline (without Mg²⁺ and Ca²⁺), pH 7.4, 150mM NaCl, 0.02% sodium azide and 50% glycerol. Store at -20 °C. Stable for 12 months from date of receipt.

Purification: Affinity-chromatography.

Immunogen: Purified recombinant fragment of human MAP3K2 expressed in E. Coli.

Uniprot: Q9Y2U5

Description: The protein encoded by this gene is a member of serine/threonine protein kinase family. This kinase preferentially activates the kinases involved in the MAP kinase signaling pathway including MAPK7 and MAP2K4. This kinase has been shown to directly phosphorylate and activate Iκappa B kinases (IKKs), and thus plays a role in NF-kappa B signaling pathway. This kinase has also been found to bind and activate protein kinase C-related kinase 2 (PRKCL2/PRK2), which suggests its involvement in PRKCL2 regulated signaling process.

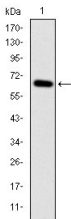


Figure 1: Western blot analysis using MAP3K2 mAb against human MAP3K2 (AA: 148-359) recombinant protein. (Expected MW is 49.2 kDa)

IMPORTANT: For western blot, incubate membrane with diluted primary Ab in 5% w/v milk , 1X TBS, 0.1% Tween@20 at 4°C with gentle shaking, overnight.

For Research Use Only. Not for use in diagnostic and therapeutic procedures. Not for resale without express authorization.