

## GPR1 Ab

[Images\(1\)](#)

Cat.#: DF2720                      Concn.: ~1mg/ml                      Mol.Wt.: 38 kDa;  
Size:                                      Source: Rabbit                              Clonality: Polyclonal

Application:                      WB 1:500-1:2000, IHC 1:50-1:200  
                                                 \*The optimal dilutions should be determined by the end user.

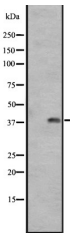
Reactivity:                              Human

Storage:                                      Rabbit IgG in phosphate buffered saline, pH 7.4, 150mM NaCl, 0.02% sodium azide and 50% glycerol. Store at -20 °C. Stable for 12 months from date of receipt.

Purification:                              The antiserum was purified by peptide affinity chromatography using SulfoLink™ Coupling Resin (Thermo Fisher Scientific).

Immunogen:                              A synthesized peptide derived from human GPR1, corresponding to a region within C-terminal amino acids.

Uniprot:                                      P46091



Western blot analysis of GPR1 expression in A431 whole cell lysates .

**IMPORTANT:** For western blot, incubate membrane with diluted primary Ab in 5% w/v milk , 1X TBS, 0.1% Tween@20 at 4°C with gentle shaking, overnight.

For Research Use Only. Not for use in diagnostic and therapeutic procedures. Not for resale without express authorization.