

KLK6 Ab

[Images\(1\)](#)

Cat.#: DF2704 Concn.: ~1mg/ml Mol.Wt.: 30 kDa
Size: Source: Rabbit Clonality: Polyclonal

Application: WB 1:500-1:2000, IHC 1:50-1:200
*The optimal dilutions should be determined by the end user.

Reactivity: Human

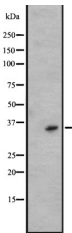
Storage: Rabbit IgG in phosphate buffered saline, pH 7.4, 150mM NaCl, 0.02% sodium azide and 50% glycerol. Store at -20 °C. Stable for 12 months from date of receipt.

Purification: The antiserum was purified by peptide affinity chromatography using SulfoLink™ Coupling Resin (Thermo Fisher Scientific).

Immunogen: A synthesized peptide derived from human KLK6, corresponding to a region within C-terminal amino acids.

Uniprot: Q92876

Description: Serine protease which exhibits a preference for Arg over Lys in the substrate P1 position and for Ser or Pro in the P2 position. Shows activity against amyloid precursor protein, myelin basic protein, gelatin, casein and extracellular matrix proteins such as fibronectin, laminin, vitronectin and collagen. Degrades alpha-synuclein and prevents its polymerization, indicating that it may be involved in the pathogenesis of Parkinson disease and other synucleinopathies. May be involved in regulation of axon outgrowth following spinal cord injury. Tumor cells treated with a neutralizing KLK6 antibody migrate less than control cells, suggesting a role in invasion and metastasis.



Western blot analysis of KLK6 expression in A431 whole cell lysates .

IMPORTANT: For western blot, incubate membrane with diluted primary Ab in 5% w/v milk , 1X TBS, 0.1% Tween@20 at 4°C with gentle shaking, overnight.