

## NEK2 Ab

[Images\(1\)](#)

Cat.#: DF2669                      Concn.: ~1mg/ml                      Mol.Wt.: 52 kDa  
Size:                                      Source: Rabbit                              Clonality: Polyclonal

**Application:**                      WB 1:500-1:2000, IHC 1:50-1:200  
\*The optimal dilutions should be determined by the end user.

**Reactivity:**                      Human

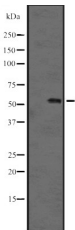
**Storage:**                              Rabbit IgG in phosphate buffered saline, pH 7.4, 150mM NaCl, 0.02% sodium azide and 50% glycerol. Store at -20 °C. Stable for 12 months from date of receipt.

**Purification:**                      The antiserum was purified by peptide affinity chromatography using SulfoLink™ Coupling Resin (Thermo Fisher Scientific).

**Immunogen:**                      A synthesized peptide derived from human NEK2, corresponding to a region within the internal amino acids.

**Uniprot:**                              P51955

**Description:**                      Protein kinase that is involved in mitotic regulation. Integral component of the mitotic spindle-assembly checkpoint which is necessary for proper chromosome segregation during metaphase-anaphase transition. Required for association of MAD2L1 to kinetochore. Phosphorylates SGOL1. May have a role at the G2-M transition. May also play a role in meiosis. Isoform 1 but not isoform 2 appears to play a role in centrosome splitting. Isoform 1 phosphorylates and activates NEK11 in G1/S-arrested cells. Isoform 2, which is not present in the nucleolus, does not.;



Western blot analysis of NEK2 expression in A431 whole cell lysates .

**IMPORTANT:** For western blot, incubate membrane with diluted primary Ab in 5% w/v milk , 1X TBS, 0.1% Tween@20 at 4°C with gentle shaking, overnight.

For Research Use Only. Not for use in diagnostic and therapeutic procedures. Not for resale without express authorization.