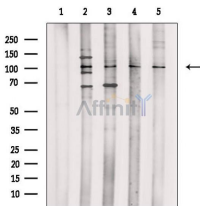


## RASA1 Ab

[References\(3\)](#) [Images\(4\)](#)

Cat.#: DF2645	Concn.: ~1mg/ml	Mol.Wt.: 110 kDa
Size:	Source: Rabbit	Clonality: Polyclonal
Application:	WB 1:500-1:2000 *The optimal dilutions should be determined by the end user.	
Reactivity:	Human,Mouse,Rat	
Storage:	Rabbit IgG in phosphate buffered saline, pH 7.4, 150mM NaCl, 0.02% sodium azide and 50% glycerol. Store at -20 °C. Stable for 12 months from date of receipt.	
Purification:	The antiserum was purified by peptide affinity chromatography using SulfoLink™ Coupling Resin (Thermo Fisher Scientific).	
Immunogen:	A synthesized peptide derived from human RASA1, corresponding to a region within C-terminal amino acids.	
Uniprot:	P20936	
Description:	Inhibitory regulator of the Ras-cyclic AMP pathway. Stimulates the GTPase of normal but not oncogenic Ras p21.	



Western blot analysis of extracts from various samples, using RASA1 Ab.  
Lane 1: A549 cells, blocked with antigen-specific peptides,  
Lane 2: A549 cells,  
Lane 3: Mouse spleen,  
Lane 4: HeLa cells,  
Lane 5: P19 cells.

**IMPORTANT:** For western blot, incubate membrane with diluted primary Ab in 5% w/v milk, 1X TBS, 0.1% Tween@20 at 4°C with gentle shaking, overnight.

For Research Use Only. Not for use in diagnostic and therapeutic procedures. Not for resale without express authorization.