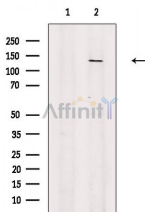


PIK3CD Ab

[Images\(2\)](#)

Cat.#: DF2627 Concn.: ~1mg/ml Mol.Wt.: 110kDa,130kDa
Size: Source: Rabbit Clonality: Polyclonal

Application: WB 1:500-1:2000
*The optimal dilutions should be determined by the end user.
Reactivity: Human,Mouse
Storage: Rabbit IgG in phosphate buffered saline, pH 7.4, 150mM NaCl, 0.02% sodium azide and 50% glycerol. Store at -20 °C. Stable for 12 months from date of receipt.
Purification: The antiserum was purified by peptide affinity chromatography using SulfoLink™ Coupling Resin (Thermo Fisher Scientific).
Immunogen: A synthesized peptide derived from human PIK3CD, corresponding to a region within the internal amino acids.
Uniprot: O00329



Western blot analysis of extracts from A549 cells, using PIK3CD Ab. The lane on the left was treated with blocking peptide.

Observed bands: 130kDa

IMPORTANT: For western blot, incubate membrane with diluted primary Ab in 5% w/v milk , 1X TBS, 0.1% Tween@20 at 4°C with gentle shaking, overnight.

For Research Use Only. Not for use in diagnostic and therapeutic procedures. Not for resale without express authorization.