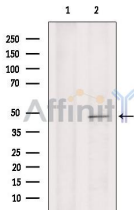


SOX4 Ab

[References\(1\)](#) [Images\(3\)](#)

Cat.#: DF2610	Concn.: ~1mg/ml	Mol.Wt.: 47 kDa
Size:	Source: Rabbit	Clonality: Polyclonal
Application:	WB 1:500-1:2000 *The optimal dilutions should be determined by the end user.	
Reactivity:	Human,Mouse	
Storage:	Rabbit IgG in phosphate buffered saline, pH 7.4, 150mM NaCl, 0.02% sodium azide and 50% glycerol. Store at -20 °C. Stable for 12 months from date of receipt.	
Purification:	The antiserum was purified by peptide affinity chromatography using SulfoLink™ Coupling Resin (Thermo Fisher Scientific).	
Immunogen:	A synthesized peptide derived from human SOX4, corresponding to a region within C-terminal amino acids.	
Uniprot:	Q06945	
Description:	Transcriptional activator that binds with high affinity to the T-cell enhancer motif 5'-AACAAAG-3' motif.	



Western blot analysis of extracts from Myeloma cells, using SOX4 Ab. The lane on the left was treated with blocking peptide.

IMPORTANT: For western blot, incubate membrane with diluted primary Ab in 5% w/v milk, 1X TBS, 0.1% Tween@20 at 4°C with gentle shaking, overnight.

For Research Use Only. Not for use in diagnostic and therapeutic procedures. Not for resale without express authorization.