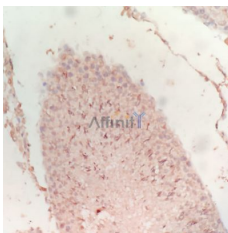


## SYCP3 Ab

[References\(1\)](#) [Images\(4\)](#)

Cat.#: DF2579	Concn.: ~1mg/ml	Mol.Wt.: 28 kDa
Size:	Source: Rabbit	Clonality: Polyclonal
Application:	WB 1:500-1:2000, IHC 1:20-1:100 *The optimal dilutions should be determined by the end user.	
Reactivity:	Human,Mouse,Rat	
Storage:	Rabbit IgG in phosphate buffered saline, pH 7.4, 150mM NaCl, 0.02% sodium azide and 50% glycerol. Store at -20 °C. Stable for 12 months from date of receipt.	
Purification:	The antiserum was purified by peptide affinity chromatography using SulfoLink™ Coupling Resin (Thermo Fisher Scientific).	
Immunogen:	A synthesized peptide derived from human SYCP3, corresponding to a region within the internal amino acids.	
Uniprot:	Q8IZU3	
Description:	Component of the transverse filaments of synaptonemal complexes (SCS), formed between homologous chromosomes during meiotic prophase. Has an essential meiotic function in spermatogenesis. May be important for testis development.	



DF2579 at 1/20 staining rat testis sections by IHC-P. The tissue was formaldehyde fixed and a heat mediated antigen retrieval step in citrate buffer was performed. The tissue was then blocked and incubated with the Ab for 1.5 hours at 22°C. An HRP conjugated goat anti-rabbit Ab was used as the secondary Ab.

**IMPORTANT:** For western blot, incubate membrane with diluted primary Ab in 5% w/v milk , 1X TBS, 0.1% Tween@20 at 4°C with gentle shaking, overnight.

For Research Use Only. Not for use in diagnostic and therapeutic procedures. Not for resale without express authorization.