

## L36mt Ab

[Images\(2\)](#)

Cat.#: DF2477                              Concn.: ~1mg/ml                              Mol.Wt.: 12 kDa.  
Size:                                              Source: Rabbit                                      Clonality: Polyclonal

Application:                                      WB 1:500-1:2000  
                                                            \*The optimal dilutions should be determined by the end user.

Reactivity:                                        Human,Mouse

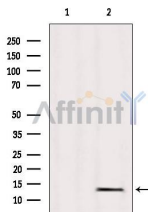
Storage:                                            Rabbit IgG in phosphate buffered saline, pH 7.4, 150mM NaCl, 0.02% sodium azide and 50% glycerol. Store at -20 °C. Stable for 12 months from date of receipt.

Purification:                                      The antiserum was purified by peptide affinity chromatography using SulfoLink™ Coupling Resin (Thermo Fisher Scientific).

Immunogen:                                        A synthesized peptide derived from human L36mt, corresponding to a region within the internal amino acids.

Uniprot:                                            Q9P0J6

Description:                                        Component of the large subunit of the mitochondrial ribosome.



Western blot analysis of extracts from Mouse heart, using L36mt Ab. Lane 1 was treated with the blocking peptide.

**IMPORTANT:** For western blot, incubate membrane with diluted primary Ab in 5% w/v milk, 1X TBS, 0.1% Tween@20 at 4°C with gentle shaking, overnight.

For Research Use Only. Not for use in diagnostic and therapeutic procedures. Not for resale without express authorization.