

## ZNF71 Ab

[Images\(2\)](#)

Cat.#: DF2474                      Concn.: ~1mg/ml                      Mol.Wt.: 54 kDa  
Size:                                      Source: Rabbit                      Clonality: Polyclonal

Application:                      WB 1:500-1:2000, IHC 1:50-1:200  
\*The optimal dilutions should be determined by the end user.

Reactivity:                      Human,Mouse,Monkey

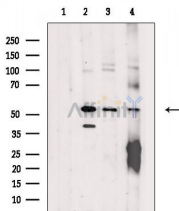
Storage:                              Rabbit IgG in phosphate buffered saline, pH 7.4, 150mM NaCl, 0.02% sodium azide and 50% glycerol. Store at -20 °C. Stable for 12 months from date of receipt.

Purification:                      The antiserum was purified by peptide affinity chromatography using SulfoLink™ Coupling Resin (Thermo Fisher Scientific).

Immunogen:                      A synthesized peptide derived from human ZNF71, corresponding to a region within N-terminal amino acids.

Uniprot:                              Q9NQZ8

Description:                      May be involved in transcriptional regulation.



Western blot analysis of extracts from various samples, using ZNF71 Ab.  
Lane 1: VERO cells(H<sub>2</sub>O<sub>2</sub> treatment), blocked with antigen-specific peptides,  
Lane 2: VERO cells(H<sub>2</sub>O<sub>2</sub> treatment),  
Lane 3: Mouse spleen,  
Lane 4: P19 cells(serum starvation treatment).

**IMPORTANT:** For western blot, incubate membrane with diluted primary Ab in 5% w/v milk, 1X TBS, 0.1% Tween@20 at 4°C with gentle shaking, overnight.

For Research Use Only. Not for use in diagnostic and therapeutic procedures. Not for resale without express authorization.