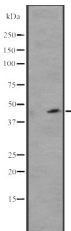


TAZ Ab

[Images\(1\)](#)

Cat.#: DF2465	Concn.: ~1mg/ml	Mol.Wt.: 44 kDa
Size:	Source: Rabbit	Clonality: Polyclonal
Application:	WB 1:500-1:2000 *The optimal dilutions should be determined by the end user.	
Reactivity:	Human,Mouse	
Storage:	Rabbit IgG in phosphate buffered saline, pH 7.4, 150mM NaCl, 0.02% sodium azide and 50% glycerol. Store at -20 °C. Stable for 12 months from date of receipt.	
Purification:	The antiserum was purified by peptide affinity chromatography using SulfoLink™ Coupling Resin (Thermo Fisher Scientific).	
Immunogen:	A synthesized peptide derived from human TAZ, corresponding to a region within the internal amino acids.	
Uniprot:	Q9GZV5	
Description:	Transcriptional coactivator which acts as a downstream regulatory target in the Hippo signaling pathway that plays a pivotal role in organ size control and tumor suppression by restricting proliferation and promoting apoptosis. The core of this pathway is composed of a kinase cascade wherein MST1/MST2, in complex with its regulatory protein SAV1, phosphorylates and activates LATS1/2 in complex with its regulatory protein MOB1, which in turn phosphorylates and inactivates YAP1 oncoprotein and WWTR1/TAZ. WWTR1 enhances PAX8 and NKX2-1/TTF1-dependent gene activation. Regulates the nuclear accumulation of SMADS and has a key role in coupling them to the transcriptional machinery such as the mediator complex.	



Western blot analysis of WWTR1 expression in HeLa cell lysates.

IMPORTANT: For western blot, incubate membrane with diluted primary Ab in 5% w/v milk, 1X TBS, 0.1% Tween@20 at 4°C with gentle shaking, overnight.



Affinity Biosciences
website: www.affbiotech.com
order: order@affbiotech.com

procedures. Not for resale without express authorization.