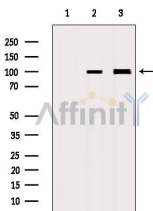


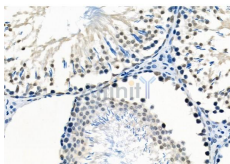
E2F7 Ab

[References\(1\)](#) [Images\(6\)](#)

Cat.#: DF2444	Concn.: ~1mg/ml	Mol.Wt.: 99 kDa
Size:	Source: Rabbit	Clonality: Polyclonal
Application:	WB 1:500-1:2000, IHC 1:50-1:200 *The optimal dilutions should be determined by the end user.	
Reactivity:	Human,Mouse,Rat,Monkey	
Storage:	Rabbit IgG in phosphate buffered saline, pH 7.4, 150mM NaCl, 0.02% sodium azide and 50% glycerol. Store at -20 °C. Stable for 12 months from date of receipt.	
Purification:	The antiserum was purified by peptide affinity chromatography using SulfoLink™ Coupling Resin (Thermo Fisher Scientific).	
Immunogen:	A synthesized peptide derived from human E2F7, corresponding to a region within N-terminal amino acids.	
Uniprot:	Q96AV8	
Description:	Along with E2F8, inhibitor of E2F-dependent transcription that is important for the control of the E2F1-TP53 apoptotic pathway. Directly represses E2F1 transcription (By similarity). Binds DNA independently of DP proteins through the E2 recognition site, 5'-TTTC[CG]CGC-3'. Appears to regulate a subset of E2F-dependent genes whose products are required for normal cell cycle progression.	



Western blot analysis of extracts from various samples, using E2F7 Ab.
Lane 1: COS-7, treated with blocking peptide;
Lane 2: COS-7;
Lane 3: Pc12.



DF2444 at 1/100 staining Rat testis tissue by IHC-P. The sample was formaldehyde fixed and a heat mediated antigen retrieval step in citrate buffer was performed. The sample was then blocked and incubated with the primary Ab at 4°C overnight. An HRP conjugated anti-Rabbit Ab was used as the secondary Ab.

IMPORTANT: For western blot, incubate membrane with diluted primary Ab

in 5% w/v milk , 1X TBS, 0.1% Tween@20 at 4°C with gentle shaking, overnight.

For Research Use Only. Not for use in diagnostic and therapeutic procedures. Not for resale without express authorization.