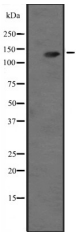


ADCY3 Ab

[Images\(1\)](#)

Cat.#: DF2370	Concn.: ~1mg/ml	Mol.Wt.: 129 kDa
Size:	Source: Rabbit	Clonality: Polyclonal
Application:	WB 1:500-1:2000, IHC 1:50-1:200 *The optimal dilutions should be determined by the end user.	
Reactivity:	Human,Mouse,Rat	
Storage:	Rabbit IgG in phosphate buffered saline, pH 7.4, 150mM NaCl, 0.02% sodium azide and 50% glycerol. Store at -20 °C. Stable for 12 months from date of receipt.	
Purification:	The antiserum was purified by peptide affinity chromatography using SulfoLink™ Coupling Resin (Thermo Fisher Scientific).	
Immunogen:	A synthesized peptide derived from human ADCY3, corresponding to a region within C-terminal amino acids.	
Uniprot:	O60266	
Description:	Mediates odorant detection (possibly) via modulation of intracellular cAMP concentration.	



Western blot analysis of ADCY3 expression in Rat olfactory epithelium lysate; Rat frontal cortex lysates.

IMPORTANT: For western blot, incubate membrane with diluted primary Ab in 5% w/v milk , 1X TBS, 0.1% Tween@20 at 4°C with gentle shaking, overnight.

For Research Use Only. Not for use in diagnostic and therapeutic procedures. Not for resale without express authorization.