

## LHX2 Ab

[Images\(1\)](#)

Cat.#: BF0059                      Concn.: ~1mg/ml                      Mol.Wt.: 44kDa  
Size:                                      Source: Mouse                      Clonality: Monoclonal

Application:                      ELISA 1:10000, WB 1:500-1:2000, IF/ICC 1:200-1:1000  
\*The optimal dilutions should be determined by the end user.

Reactivity:                      Human

Storage:                              Mouse IgG1 in phosphate buffered saline (without Mg<sup>2+</sup> and Ca<sup>2+</sup>), pH 7.4, 150mM NaCl, 0.02% sodium azide and 50% glycerol. Store at -20 °C. Stable for 12 months from date of receipt.

Purification:                      Affinity-chromatography.

Immunogen:                      Purified recombinant fragment of human LHX2 expressed in E. Coli.

Uniprot:                              P50458

Description:                      This gene encodes a protein belonging to a large protein family, members of which carry the LIM domain, a unique cysteine-rich zinc-binding domain. The encoded protein may function as a transcriptional regulator.

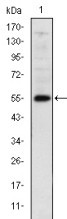


Figure 1: Western blot analysis using LHX2 mAb against human LHX2 (AA: 200-406) recombinant protein. (Expected MW is 55 kDa)

**IMPORTANT:** For western blot, incubate membrane with diluted primary Ab in 5% w/v milk, 1X TBS, 0.1% Tween@20 at 4°C with gentle shaking, overnight.

For Research Use Only. Not for use in diagnostic and therapeutic procedures. Not for resale without express authorization.