

## CXCR7 Ab

[Images\(1\)](#)

Cat.#: DF2329                                      Concn.: ~1mg/ml                                      Mol.Wt.: 52 kDa  
Size:    Source: Rabbit    Clonality: Polyclonal

Application:                                      WB 1:500-1:2000, IHC 1:50-1:200  
  \*The optimal dilutions should be determined by the end user.

Reactivity:                                        Human,Rat

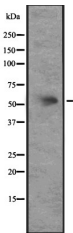
Storage:    Rabbit IgG in phosphate buffered saline, pH 7.4, 150mM NaCl, 0.02% sodium azide and 50% glycerol. Store at -20 °C. Stable for 12 months from date of receipt.

Purification:                                    The antiserum was purified by peptide affinity chromatography using SulfoLink™ Coupling Resin (Thermo Fisher Scientific).

Immunogen:                                      A synthesized peptide derived from human CXCR7, corresponding to a region within the internal amino acids.

Uniprot:    P25106

Description:                                      Receptor for CXCL12/SDF1. Acts as coreceptor with CXCR4 for a restricted number of HIV isolates.



Western blot analysis of CXCR7 expression in HEK293 cells .

**IMPORTANT:** For western blot, incubate membrane with diluted primary Ab in 5% w/v milk , 1X TBS, 0.1% Tween@20 at 4°C with gentle shaking, overnight.

For Research Use Only. Not for use in diagnostic and therapeutic procedures. Not for resale without express authorization.