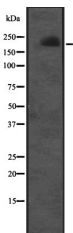


## CUL7 Ab

[Images\(1\)](#)

|               |  |                       |
|---------------|--|-----------------------|
| Cat.#: DF2324 | Concn.: ~1mg/ml  | Mol.Wt.: 191 kDa      |
| Size:         | Source: Rabbit   | Clonality: Polyclonal |
| Application:  | WB 1:500-1:2000<br>*The optimal dilutions should be determined by the end user.  |                       |
| Reactivity:   | Human,Mouse  |                       |
| Storage:      | Rabbit IgG in phosphate buffered saline, pH 7.4, 150mM NaCl, 0.02% sodium azide and 50% glycerol. Store at -20 °C. Stable for 12 months from date of receipt.  |                       |
| Purification: | The antiserum was purified by peptide affinity chromatography using SulfoLink™ Coupling Resin (Thermo Fisher Scientific).  |                       |
| Immunogen:    | A synthesized peptide derived from human CUL7, corresponding to a region within C-terminal amino acids.  |                       |
| Uniprot:      | Q14999   |                       |
| Description:  | Component of a probable SCF-like E3 ubiquitin-protein ligase complex, which mediates the ubiquitination and subsequent proteasomal degradation of target proteins. Probably plays a role in the degradation of proteins involved in endothelial proliferation and/or differentiation (By similarity). Seems not to promote polyubiquitination and proteasomal degradation of TP53. In vitro, complexes of CUL7 with either CUL9 or FBXW8 or TP53 contain E3 ubiquitin-protein ligase activity. |                       |



Western blot analysis of CUL7 expression in Molt-4 cell lysates .

**IMPORTANT:** For western blot, incubate membrane with diluted primary Ab in 5% w/v milk , 1X TBS, 0.1% Tween@20 at 4°C with gentle shaking, overnight.

For Research Use Only. Not for use in diagnostic and therapeutic procedures. Not for resale without express authorization.