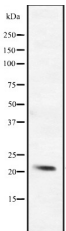


## BCL2L10 Ab

[Images\(1\)](#)

Cat.#: DF2276	Concn.: ~1mg/ml	Mol.Wt.: 22 kDa
Size:	Source: Rabbit	Clonality: Polyclonal
Application:	WB 1:500-1:2000, IHC 1:50-1:200 *The optimal dilutions should be determined by the end user.	
Reactivity:	Human,Mouse	
Storage:	Rabbit IgG in phosphate buffered saline, pH 7.4, 150mM NaCl, 0.02% sodium azide and 50% glycerol. Store at -20 °C. Stable for 12 months from date of receipt.	
Purification:	The antiserum was purified by peptide affinity chromatography using SulfoLink™ Coupling Resin (Thermo Fisher Scientific).	
Immunogen:	A synthesized peptide derived from human BCL2L10, corresponding to a region within the internal amino acids.	
Uniprot:	Q9HD36	
Description:	Promotes cell survival. Suppresses apoptosis induced by BAX but not BAK.	



Western blot analysis of BCL2L10 expression in ; HepG2 cell lysates.

**IMPORTANT:** For western blot, incubate membrane with diluted primary Ab in 5% w/v milk , 1X TBS, 0.1% Tween@20 at 4°C with gentle shaking, overnight.

For Research Use Only. Not for use in diagnostic and therapeutic procedures. Not for resale without express authorization.