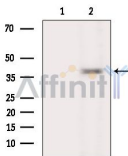


## NEUROD6 Ab

[Images\(2\)](#)

Cat.#: DF2216	Concn.: ~1mg/ml	Mol.Wt.: 38 kDa)
Size:	Source: Rabbit	Clonality: Polyclonal

Application:	WB 1:500-1:2000 *The optimal dilutions should be determined by the end user.
Reactivity:	Human,Mouse,Rat
Storage:	Rabbit IgG in phosphate buffered saline, pH 7.4, 150mM NaCl, 0.02% sodium azide and 50% glycerol. Store at -20 °C. Stable for 12 months from date of receipt.
Purification:	The antiserum was purified by peptide affinity chromatography using SulfoLink™ Coupling Resin (Thermo Fisher Scientific).
Immunogen:	A synthesized peptide derived from human NEUROD6, corresponding to a region within the internal amino acids.
Uniprot:	Q96NK8
Description:	Activates E box-dependent transcription in collaboration with TCF3/E47. May be a trans-acting factor involved in the development and maintenance of the mammalian nervous system. Transactivates the promoter of its own gene



Western blot analysis of extracts from Rat liver, using NEUROD6 Ab. The lane on the left was treated with blocking peptide.

**IMPORTANT:** For western blot, incubate membrane with diluted primary Ab in 5% w/v milk , 1X TBS, 0.1% Tween@20 at 4°C with gentle shaking, overnight.

For Research Use Only. Not for use in diagnostic and therapeutic procedures. Not for resale without express authorization.