

## LDHAL6A Ab

[Images\(1\)](#)

Cat.#: DF2208                      Concn.: ~1mg/ml                      Mol.Wt.: 36 kDa  
Size:                                      Source: Rabbit                              Clonality: Polyclonal

Application:                      WB 1:500-1:2000, IHC 1:50-1:200  
   \*The optimal dilutions should be determined by the end user.

Reactivity:                              Human

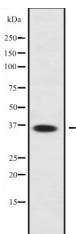
Storage:                              Rabbit IgG in phosphate buffered saline, pH 7.4, 150mM NaCl, 0.02% sodium azide and 50% glycerol. Store at -20 °C. Stable for 12 months from date of receipt.

Purification:                              The antiserum was purified by peptide affinity chromatography using SulfoLink™ Coupling Resin (Thermo Fisher Scientific).

Immunogen:                              A synthesized peptide derived from human LDHAL6A, corresponding to a region within the internal amino acids.

Uniprot:                                      Q6ZMR3

Description:                              Displays an lactate dehydrogenase activity. Significantly increases the transcriptional activity of JUN, when overexpressed.



Western blot analysis of LDHAL6A expression in HepG2 cell lysates.

**IMPORTANT:** For western blot, incubate membrane with diluted primary Ab in 5% w/v milk, 1X TBS, 0.1% Tween@20 at 4°C with gentle shaking, overnight.

For Research Use Only. Not for use in diagnostic and therapeutic procedures. Not for resale without express authorization.