

alpha-tubulin Mouse mAb

[Images\(1\)](#)

Cat.#: BF9210 Concn.: ~1mg/ml Mol.Wt.: 52KD
Size: Source: Mouse Clonality: Monoclonal

Application: WB 1:1000-1:5000, IP 1:200, IF/ICC 1:200
*The optimal dilutions should be determined by the end user.

Reactivity: Human,Mouse,Rat

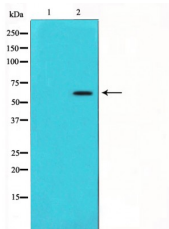
Storage: 1mg/ml in PBS, pH 7.4. Store at -20 °C. Stable for 12 months from date of receipt.

Purification: affinity purification.

Immunogen: Mouse monoclonal antibody is prepared by immunizing recombinant protein.

Uniprot: Q71U36/P68363

Description: Tubulin is one of several members of a small family of globular proteins. The most common members of the tubulin family are α -tubulin and β -tubulin, the proteins that make up microtubules. Each has a molecular weight of approximately 55 kiloDaltons. Microtubules are assembled from dimers of α - and β -tubulin.



Western blot analysis of Mouse Brain Tissue with alpha-tubulin Mouse mAb diluted at 1:5,000.

IMPORTANT: For western blot, incubate membrane with diluted primary Ab in 5% w/v milk , 1X TBS, 0.1% Tween@20 at 4°C with gentle shaking, overnight.

For Research Use Only. Not for use in diagnostic and therapeutic procedures. Not for resale without express authorization.