

## His-Tag Ab

[References\(13\)](#) [Images\(4\)](#)

Cat.#: T0009                      Conc.: ~1mg/ml                      Mol.Wt.:  
 Size:                                  Source: Mouse                      Clonality: Monoclonal

Application:                      WB 1:3000-1:10000, IF/ICC: 1:200, IP 1:100-1:500  
 \*The optimal dilutions should be determined by the end user.

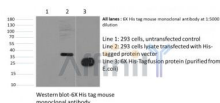
Reactivity:                      All

Storage:                          Mouse IgG1 in phosphate buffered saline (without Mg<sup>2+</sup> and Ca<sup>2+</sup>), pH 7.4, 150mM NaCl, 0.02% sodium azide and 50% glycerol. Store at -20 °C. Stable for 12 months from date of receipt.

Purification:                      Affinity-chromatography.

Immunogen:                      A synthetic peptide HHHHHH coupled to KLH.

Description:                      N/A



Western blot analysis of His-Tag Mouse Monoclonal Ab expression in 6\*His-tag fusion protein sample

**IMPORTANT:** For western blot, incubate membrane with diluted primary Ab in 5% w/v milk, 1X TBS, 0.1% Tween@20 at 4°C with gentle shaking, overnight.

For Research Use Only. Not for use in diagnostic and therapeutic procedures. Not for resale without express authorization.