

## Flag-Tag Ab

[References\(24\)](#) [Images\(10\)](#)

Cat.#: T0003	Concn.: ~1mg/ml	Mol.Wt.:
Size:	Source: Mouse	Clonality: Monoclonal

Application: WB 1:3000-1:10000, IF/ICC: 1:200, IP 1:200, IHC 1:50-1:200

\*The optimal dilutions should be determined by the end user.

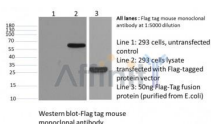
Reactivity: All

Storage: Mouse IgG1 in phosphate buffered saline (without Mg<sup>2+</sup> and Ca<sup>2+</sup>), pH 7.4, 150mM NaCl, 0.02% sodium azide and 50% glycerol. Store at -20 °C. Stable for 12 months from date of receipt.

Purification: Affinity-chromatography.

Immunogen: A synthetic peptide DYKDDDDK coupled to KLH.

Description: FLAG tag Mouse mAb is part of the series of Tag antibodies, the excellent quality in the research. FLAG tag antibody is a highly sensitive and affinity PAB applicable to FLAG-tagged fusion protein detection. FLAG tag antibody can detect FLAG tags in internal, C-terminal, or N-terminal recombinant proteins.



Western blot analysis of Flag-Tag Mouse Monoclonal Ab expression in Flag-tag fusion protein sample

**IMPORTANT:** For western blot, incubate membrane with diluted primary Ab in 5% w/v milk, 1X TBS, 0.1% Tween@20 at 4°C with gentle shaking, overnight.

For Research Use Only. Not for use in diagnostic and therapeutic procedures. Not for resale without express authorization.