

## C-Myc-Tag Ab

[References\(4\)](#) [Images\(3\)](#)

Cat.#: T0001                                      Concn.: ~1mg/ml                                      Mol.Wt.:  
Size:    Source: Mouse    Clonality: Monoclonal

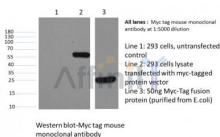
Application:                                      WB 1:3000-1:10000, IF/ICC: 1:200, IP 1:200  
\*The optimal dilutions should be determined by the end user.  
Reactivity:    All

Storage:    Mouse IgG1 in phosphate buffered saline (without Mg<sup>2+</sup> and Ca<sup>2+</sup>), pH 7.4, 150mM NaCl, 0.02% sodium azide and 50% glycerol. Store at -20 °C. Stable for 12 months from date of receipt.

Purification:    Affinity-chromatography.

Immunogen:    A synthetic peptide EQKLISEEDL coupled to KLH.

Description:    c-Myc-tag antibody is part of the Tag series of antibodies, the best quality in the research. The immunogen of c-Myc tag antibody is a synthetic peptide corresponding to residues 410-419 of the human p62 c-myc protein conjugated to KLH. C-Myc tag antibody is suitable for detecting the expression level of c-Myc or its fusion proteins where the c-Myc tag is terminal or internal.



Western blot analysis of C-Myc-Tag Mouse Monoclonal Ab expression in MYC-tag fusion protein sample

**IMPORTANT:** For western blot, incubate membrane with diluted primary Ab in 5% w/v milk, 1X TBS, 0.1% Tween@20 at 4°C with gentle shaking, overnight.

For Research Use Only. Not for use in diagnostic and therapeutic procedures. Not for resale without express authorization.