

PAX4 Ab

[Images\(1\)](#)

Cat.#: BF0438	Concn.: ~1mg/ml	Mol.Wt.: 38kDa
Size:	Source: Mouse	Clonality: Monoclonal

Application: ELISA 1:10000, WB 1:500-1:2000
 *The optimal dilutions should be determined by the end user.

Reactivity: Human

Storage: Mouse IgG1 in phosphate buffered saline (without Mg²⁺ and Ca²⁺), pH 7.4, 150mM NaCl, 0.02% sodium azide and 50% glycerol. Store at -20 °C. Stable for 12 months from date of receipt.

Purification: Affinity-chromatography.

Immunogen: Purified recombinant fragment of human PAX4 expressed in E. Coli.

Uniprot: O43316

Description: This gene is a member of the paired box (PAX) family of transcription factors. Members of this gene family typically contain a paired box domain, an octapeptide, and a paired-type homeodomain. These genes play critical roles during fetal development and cancer growth. The paired box 4 gene is involved in pancreatic islet development and mouse studies have demonstrated a role for this gene in differentiation of insulin-producing beta cells.

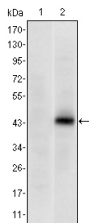


Figure 1: Western blot analysis using PAX4 mAb against HEK293 (1) and PAX4(AA: 105-232)-hlgGfC transfected HEK293 (2) cell lysate.

IMPORTANT: For western blot, incubate membrane with diluted primary Ab in 5% w/v milk , 1X TBS, 0.1% Tween@20 at 4°C with gentle shaking, overnight.

For Research Use Only. Not for use in diagnostic and therapeutic procedures. Not for resale without express authorization.