

DCLRE1C Ab

[References\(1\)](#) [Images\(2\)](#)

Cat.#: DF7418
Size:

Concn.: ~1mg/ml
Source: Rabbit

Mol.Wt.: 78kDa
Clonality: Polyclonal

Application:

WB 1:500-1:2000, IHC 1:50-1:200, IF/ICC 1:100-1:500

*The optimal dilutions should be determined by the end user.

Reactivity:

Human,Mouse,Rat

Storage:

Rabbit IgG in phosphate buffered saline , pH 7.4, 150mM NaCl, 0.02% sodium azide and 50% glycerol. Store at -20 °C. Stable for 12 months from date of receipt.

Purification:

The antiserum was purified by peptide affinity chromatography using SulfoLink™ Coupling Resin (Thermo Fisher Scientific).

Immunogen:

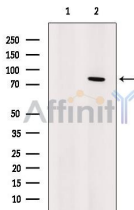
A synthesized peptide derived from human DCLRE1C, corresponding to a region within C-terminal amino acids.

Uniprot:

Q96SD1

Description:

This gene encodes a nuclear protein that is involved in V(D)J recombination and DNA repair. The protein has single-strand-specific 5'-3' exonuclease activity; it also exhibits endonuclease activity on 5' and 3' overhangs and hairpins when complexed with protein kinase. DNA-activated, catalytic polypeptide. Mutations in this gene cause Athabaskan-type severe combined immunodeficiency (SCIDA).



Western blot analysis of extracts from HeLa cells, using DCLRE1C Ab. The lane on the left was treated with blocking peptide.

IMPORTANT: For western blot, incubate membrane with diluted primary Ab in 5% w/v milk , 1X TBS, 0.1% Tween@20 at 4°C with gentle shaking, overnight.

For Research Use Only. Not for use in diagnostic and therapeutic procedures. Not for resale without express authorization.