

## TFCP2 Ab

[Images\(1\)](#)

Cat.#: DF7395                      Concn.: ~1mg/ml                      Mol.Wt.: 57kDa  
Size:                                      Source: Rabbit                              Clonality: Polyclonal

Application:                      WB 1:500-1:2000, IHC 1:50-1:200  
\*The optimal dilutions should be determined by the end user.

Reactivity:                      Human,Mouse,Rat

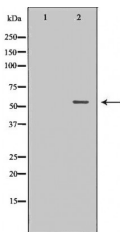
Storage:                              Rabbit IgG in phosphate buffered saline , pH 7.4, 150mM NaCl, 0.02% sodium azide and 50% glycerol. Store at -20 °C. Stable for 12 months from date of receipt.

Purification:                      The antiserum was purified by peptide affinity chromatography using SulfoLink™ Coupling Resin (Thermo Fisher Scientific).

Immunogen:                      A synthesized peptide derived from human TFCP2, corresponding to a region within the internal amino acids.

Uniprot:                              Q12800

Description:                      This gene encodes a transcription factor that binds the alpha-globin promoter and activates transcription of the alpha-globin gene. The encoded protein regulates erythroid gene expression, plays a role in the transcriptional switch of globin gene promoters, and it activates many other cellular and viral gene promoters. The gene product interacts with certain inflammatory response factors, and polymorphisms of this gene may be involved in the pathogenesis of Alzheimer's disease.



Western blot analysis of 293T whole cell lysates, using TFCP2 Ab. The lane on the left was treated with the antigen-specific peptide.

**IMPORTANT:** For western blot, incubate membrane with diluted primary Ab in 5% w/v milk , 1X TBS, 0.1% Tween@20 at 4°C with gentle shaking, overnight.

For Research Use Only. Not for use in diagnostic and therapeutic procedures. Not for resale without express authorization.