

## PRDM14 Ab

[Images\(2\)](#)

Cat.#: DF7387                      Concn.: ~1mg/ml                      Mol.Wt.: 64kDa  
Size:                                      Source: Rabbit                              Clonality: Polyclonal

Application:                      WB 1:500-1:2000, IHC 1:50-1:200, IF/ICC 1:50-1:200, IP 1:20-1:100,  
CHIP 1:20-1:100

\*The optimal dilutions should be determined by the end user.

Reactivity:                      Human,Mouse,Rat

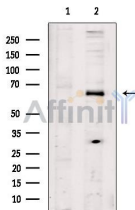
Storage:                              Rabbit IgG in phosphate buffered saline , pH 7.4, 150mM NaCl, 0.02%  
sodium azide and 50% glycerol. Store at -20 °C. Stable for 12 months from  
date of receipt.

Purification:                      The antiserum was purified by peptide affinity chromatography using  
SulfoLink™ Coupling Resin (Thermo Fisher Scientific).

Immunogen:                      A synthesized peptide derived from human PRDM14, corresponding to a  
region within N-terminal amino acids.

Uniprot:                              Q9GZV8

Description:                      This gene encodes a member of the PRDI-BF1 and RIZ homology domain  
containing (PRDM) family of transcriptional regulators. The encoded  
protein may possess histone methyltransferase activity and plays a critical  
role in cell pluripotency by suppressing the expression of differentiation  
marker genes. Expression of this gene may play a role in breast cancer.



Western blot analysis of extracts from HepG2 cells, using PRDM14 Ab. The lane on the left was treated with blocking peptide.

**IMPORTANT:** For western blot, incubate membrane with diluted primary Ab in 5% w/v milk , 1X TBS, 0.1% Tween@20 at 4°C with gentle shaking, overnight.

For Research Use Only. Not for use in diagnostic and therapeutic procedures. Not for resale without express authorization.